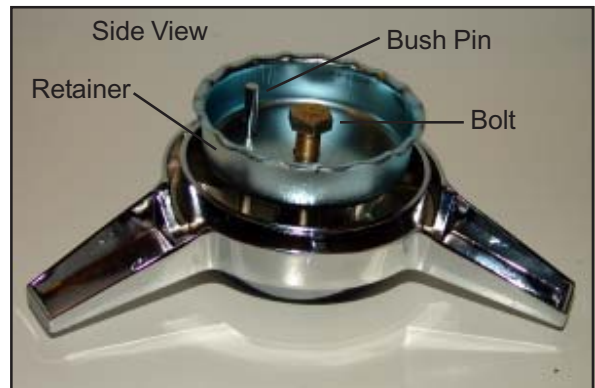




## Truespoke 3-Bar Spinner cap mounting instructions

The spinner and retainer device were designed for the modern Truespoke wire wheels. The cap will also fit older Truespoke wire wheels as well. In some cases, the retainer device may be too wide to easily fit older models of Truespokes. Please don't give up! You may be able to tap the retainer down the center hub until it comes to rest against the spoke heads. You may also alter the shape of the retainer to fit your hub. Please carefully screw the bolt into the cap. You can strip the threads on the cap if you aren't careful. We suggest pre-threading the bolt before you assemble the parts. Spinners that have stripped threads cannot be returned. If you simply cannot get the retainer to fit your wheels, please return the items in the same condition as received for a refund. Please call us first for tech-support by telephone. **Thank you for purchasing this special item.**

- 1) Before installing the spinner on your hub, take the bolt provided and carefully thread it into the cap. The fine threads can strip or cross-thread easily, so, be careful how you thread the bolt. Remove the bolt after pre-threading it.
- 2) Place the spinner on the hub and then insert the washer from the backside. Push the washer as far as it will go. The edges of the washer should engage or catch on the heads of the spokes. If the washer is too big to slide all the way down to the heads of the spokes, take a wood object and gently hammer it down as far as it will go. If the shape of the washer changes, it will not matter because this part is not visible. Some customers have smoothed the edges off of the washer when it is too big for the hub.
- 3) The pin on the back of the spinner should be aligned and pass-through the washer as shown.
- 4) Using a socket wrench, tighten the bolt down securely but do not over-tighten it. The spinner needs a small amount of free-play to rotate slightly. The spinner blades will cover at least one of the bolt holes. Simply turn the spinner to allow access to the bolt holes to tighten the lug nuts.
- 5) Be careful to not cross-thread the bolt in the spinner cap. The fine threads can easily strip the cap. Stripped caps cannot be returned.
- 6) If the bolt is too long for your wheel, simply add a washer or two. If your bolt is too short, use a longer bolt. The bolt supplied is a 5/16 - 24 X 3/4 size.



Insert the retainer into the throat of the hub. Make sure the domed portion of the retainer is facing towards the spinner. Push the retainer in as far as it will go. You may have to apply pressure or use a wood object to gently force the retainer in as deep as you can get it. If the bolt is not long enough to thread into the cap threads, you may have to obtain a longer bolt. If the bolt is too long, add a washer or two. Make sure that the pin goes through the alignment hole as shown.



**Left:** This photo shows the back-side of the wheel with the retainer device in place and pushed in to where the spoke heads meet it. Note how the bolt is in position and the pin goes through the hole. If you have an older model of Truespokes, in some instances, the retainer may be too large to slide all the way down until it comes to rest against the spoke heads. If so, use a wooden object and a hammer and tap the retainer device until it slides into place.

If the retainer is simply too wide to enter the hub, you may have to modify the retainer by re-shaping or grinding it to fit. If you still cannot get the retainer to fit, you can return the items to us for a refund if they are returned to us in the same condition as sent. Please call us first for tech support. We may be able to solve any problems by telephone. **Thank you.**

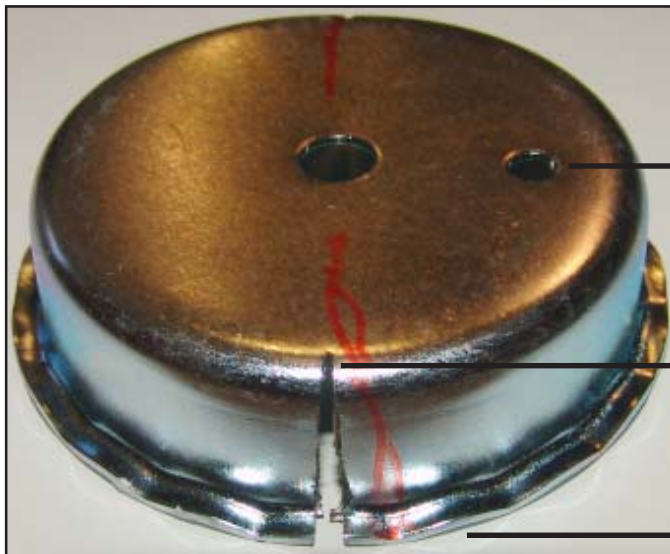


## Truespoke 3-Bar Spinner and Donut Style Caps Modification Instructions

**Introduction:** Since Truespoke was founded in 1974, there have been various prior owners of the company who have made changes to the basic product over the years. As a result, our new 3-bar spinner and Donut style cap may not be a direct bolt-on item for every Truespoke. However, with a few simple modifications, you may be able to attach our caps easily yourself. This instruction sheet tells how to modify the retainer to allow it to increase or decrease in size.

**Problem:** The retainer provided is too small or too big to fit inside the throat of your Truespoke hub.

**Solution:** Take the retainer provided and make two slits in it with a band saw or hack saw or other cutting device that you have access to. Cut from the bottom serated edge of the retainer to the top of the retainer. When completed cutting, to increase the size of the retainer, gently bend the sides of the retainer outwards. To make the retainer smaller, push the retainer sides together to collapse the size of the retainer. You may have to make larger slits in the material to permit the sides to contract. The goal is to get the serated edges of the retainer to seat against the spoke heads in the throat of the hub when you push the retainer down. Please wear safety goggles or lenses when cutting metal. For assistance, please call or email us for technical support. If you are unable or unwilling to make this simple modification, simply call us and we will send you a modified retainer. You are also free to return the product for a full refund if returned in the same condition as sent.



Bush pin hole - do not make cuts near this hole. Make cuts in the 9 and 3 o'clock position with the bush pin hole at 12 o'clock.

Cut slit just into the rounded shoulder. The retainer sides should spread easily. To make the retainer smaller, you may need to cut a wider slit and then use a wooden object to push the retainer down the center of the hub until it seats. Do not cut too far.

Serated edge